



CADMATE

Your design companion

2025

CADMATE - Precision Perfected,
Effortlessly

ABOUT US

THE PRODUCTS

CADMATE

CADMATE
TAKE OFF

CADMATE
MECHANICAL

CADMATE is developed to provide a cost-effective alternative and robust CAD application.

► Origins

CADMATE was created by a team of experienced professionals in the CAD software and related industries. Their aim was to deliver a powerful, user-friendly, and affordable CAD solution that caters to the needs of various design and engineering fields.

► Development and Launch

The software was crafted to ensure that users transitioning from other CAD programs can adapt quickly without the need for extensive retraining.

► Growth and Adoption

Since its launch, CADMATE has been embraced by a wide array of industries, including architecture, engineering, and construction. Its affordability and comprehensive features have made it especially appealing to business of all sizes, from small startups to large enterprises, seeking robust CAD capabilities without the high costs of premium software.

► Continuous Improvement

CADMATE's development focuses on ongoing enhancements driven by user feedback and technological advancements. Regular updates and new versions are released to improve functionality, performance, and compatibility with various file formats.

► Market Position

CADMATE has established a niche in the CAD software market by balancing cost-efficiency with powerful features. It has become a preferred choice for users looking for alternatives to pricier CAD software, particularly in regions and sectors facing budget constraints.

► Community and Support

Over the years, CADMATE has fostered a supportive user community and provides extensive resources such as tutorials, documentation, and customer support to help users maximize the software's potential.

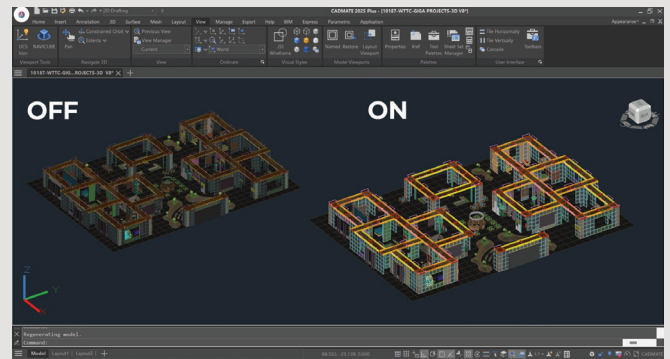
Overall, CADMATE's history reflects a strategic effort to democratize access to high-quality CAD tools by offering an affordable yet capable alternative to traditional CAD software solutions.

NEW FUNCTIONALITIES



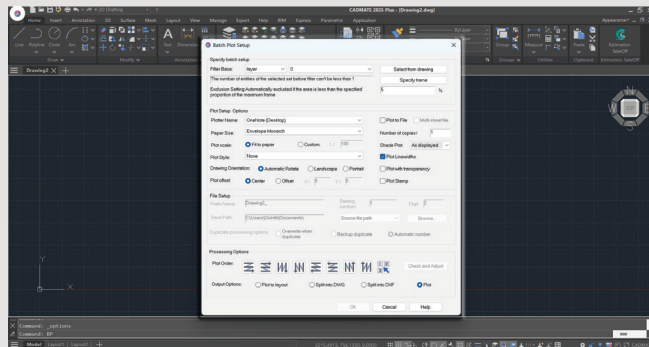
Hardware Acceleration

CADMATE 2025 now includes Hardware Acceleration, which uses the powerful graphics processing capabilities of the GPU to help the CPU handle tasks more efficiently. This update greatly improves the quality of graphic display and speeds up your work, enhancing the overall performance of the software.



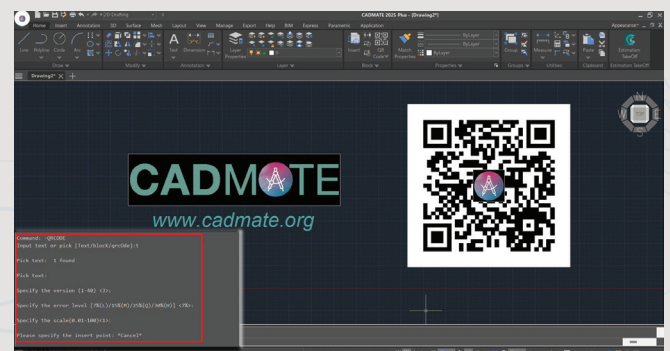
Batch Plot

The Batch Plot feature in CADMATE 2025 has made comprehensive improvements based on user feedback to support a wider range of scenarios. There are 11 major updates, covering Specify Batch Setup, Plot Setup Options, File Setup and Processing Options, ensuring a more efficient and flexible plotting experience.



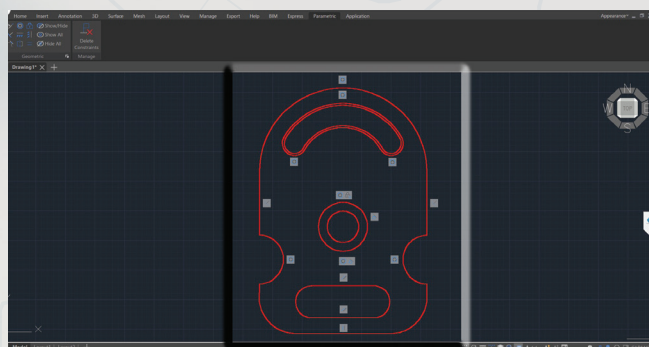
QR Code

The QRCODE command now supports command line mode -QRCODE, facilitating the creation of QR codes via scripts or programs.



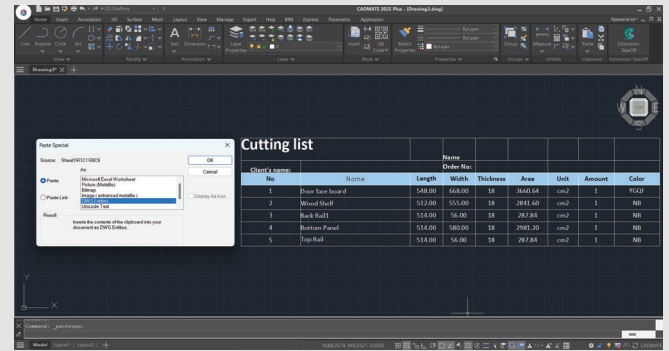
Parametric Constraints

CADMATE 2025 introduces Parametric Constraints, focusing exclusively on geometric constraints this year. Geometric constraints manage how objects relate to others, enabling automatic adjustments to other objects when changes are made. They also restrict changes to distance and angle values, ensuring design precision.



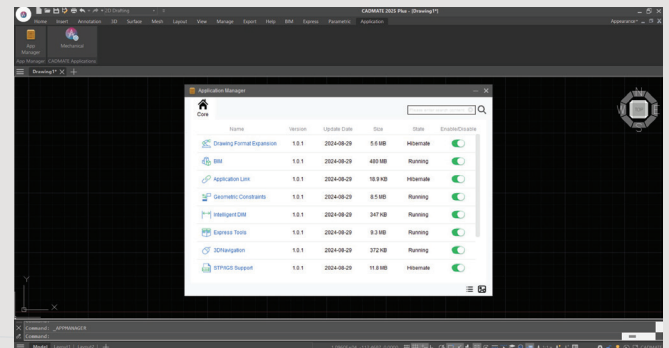
PASTESPEC

After copying data from an Excel worksheet to the clipboard, use the PASTESPEC command and select 'Paste Link' to paste the Excel data as 'DWG Entities'. After insertion, you can modify the table. Additionally, a data link will be automatically created, and you can update this link using the DATALINK-UPDATE command.



License Manager

CADMATE 2025 introduces key updates to enhance licensing management and security, such as: subscription notifications before expiration, real-time online user number display for the CADMATE Network License Manager, and the upgrade of the USB standalone dongle from Living Dongle to the Moway Dongle.

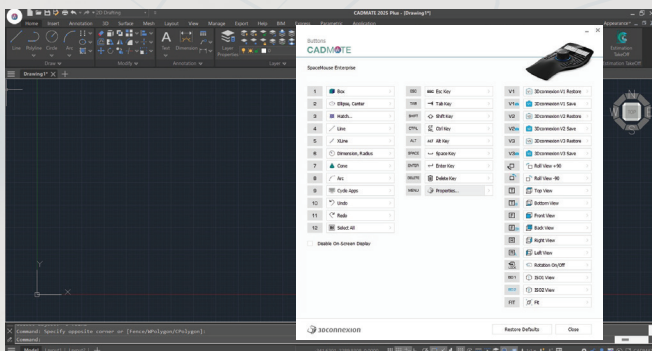


Application Manager

Application Manager is a unified system for plugin management. Users can search, enable/disable, and view details of modular applications within the Application Manager, achieving the most suitable service configuration with minimal resource utilization.

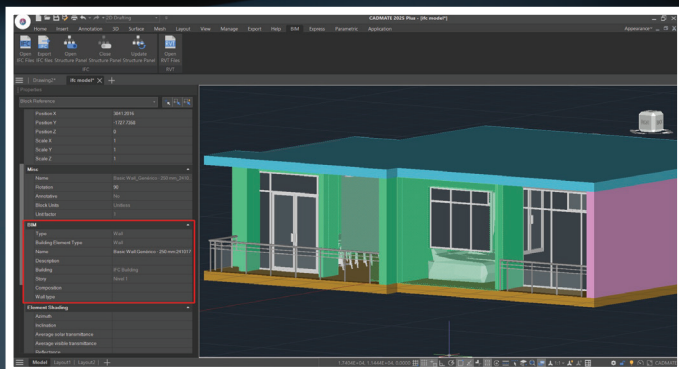
3D Mouse Device Adaption

The SpaceMouse and CadMouse from 3Dconnexion are now supported on CADMATE 2025. You can manipulate 2D views and 3D perspectives using the controller's joystick, switch views and execute commands using the mouse's shortcut keys, and you can also customize the mouse button configurations within the driver software for these devices.



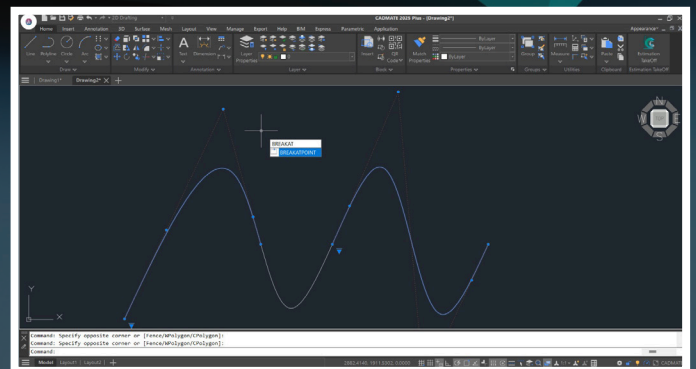
BIM Data Editing

BIM data can now be edited directly in CADMATE 2025, providing enhanced efficiency for your design workflow!



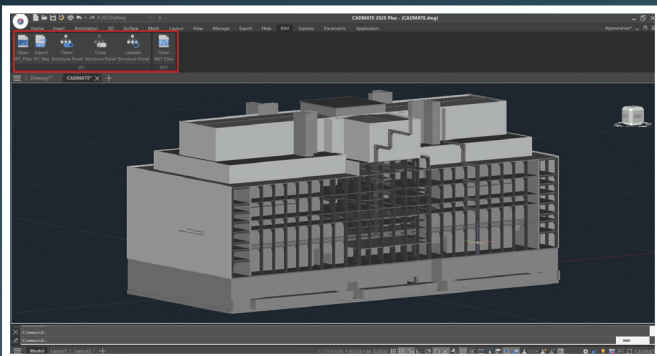
Break at Point

BREAKATPOINT command allows you to break the selected object into two objects at a specified point, without the need to specify a second point and create a gap like the BREAK command does.



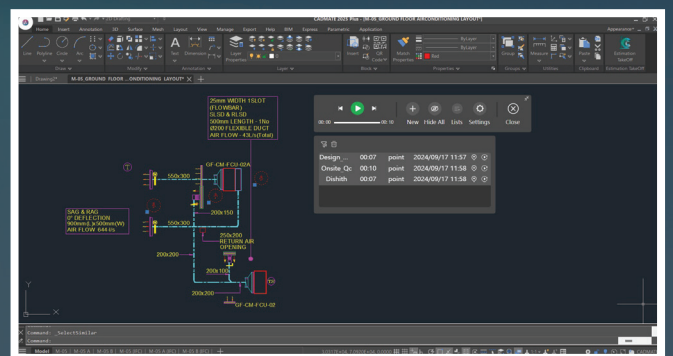
3D MODEL Import & Export

On the basis of IFC Import, you can now export IFC files and import RVT files with complete BIM data, and STEP/IGES module will be included in CADMATE installer, you don't need to install it separately.



Voice Annotation

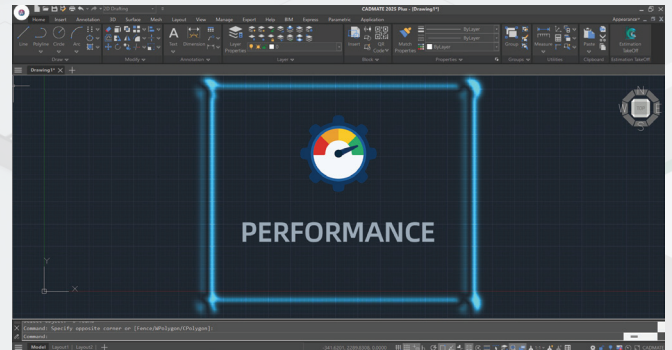
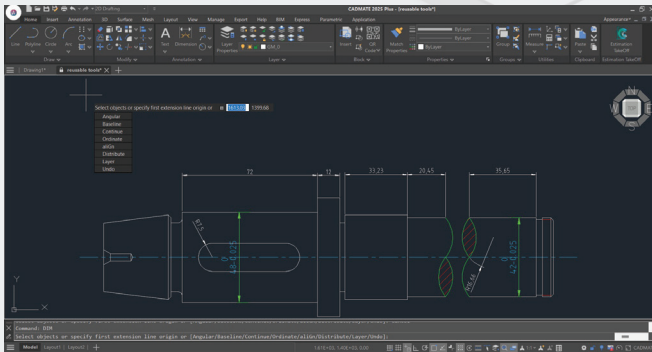
You can now add voice annotations to drawings in CADMATE 2025, enhancing clarity. Through the Voice Manager panel, you can easily create, record, play, and manage voice annotations.



IMPROVEMENTS

Performance

CADMATE 2025 introduces an incremental save mechanism, boosting SAVEAS speed by over 30% and QSAVE by more than three times. File reading, display, and software initialization are optimized, improving average drawing opening speed by over 25%. TRIM and EXTEND performance on complex drawings improved by 69%, and HATCH display precision is also enhanced, eliminating excess lines in gradient and transparent hatch, ensuring a more efficient workflow.

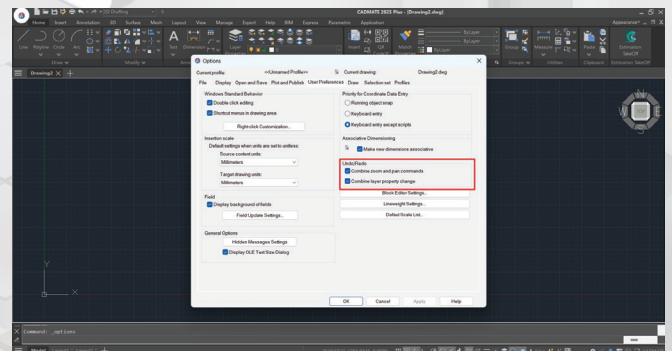
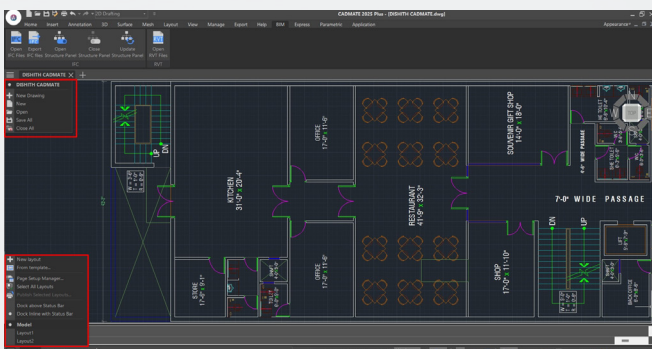


DIM

To create various types of dimensions, you no longer need to switch between different commands. Simply execute the DIM command, hover your mouse cursor over objects to see a dimension preview, click to confirm, and place the dimension. This streamlines the annotation process and enhances efficiency.

UNDO

In CADMATE 2025, continuous zooming, panning, and layer-related operations can be undone in one step, streamlining the workflow and reducing repetitive actions.



File & Layout Tab Bar

The File Tab Bar and Layout Tab Bar in CADMATE 2025 have been updated with new appearances. Adding "New" and "List" buttons, now you can create, open, switch drawings/layouts directly from the tab bar, making operations more convenient and efficient. Additionally, indicators for "Read Only" or "Modified" files have been added too to provide clearer status visibility.



INNOVATIVES

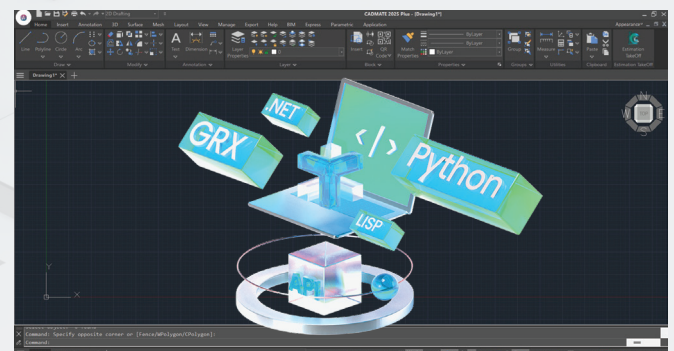


DWGUNITS

Different projects or application scenarios may require different units. For example, architectural design might use meters, while mechanical design might use inches. In CADMATE 2025, the newly added DWGUNITS command allows you to change the units of drawings to meet the standard size and annotation requirements of the drawing and avoid errors due to using different units.

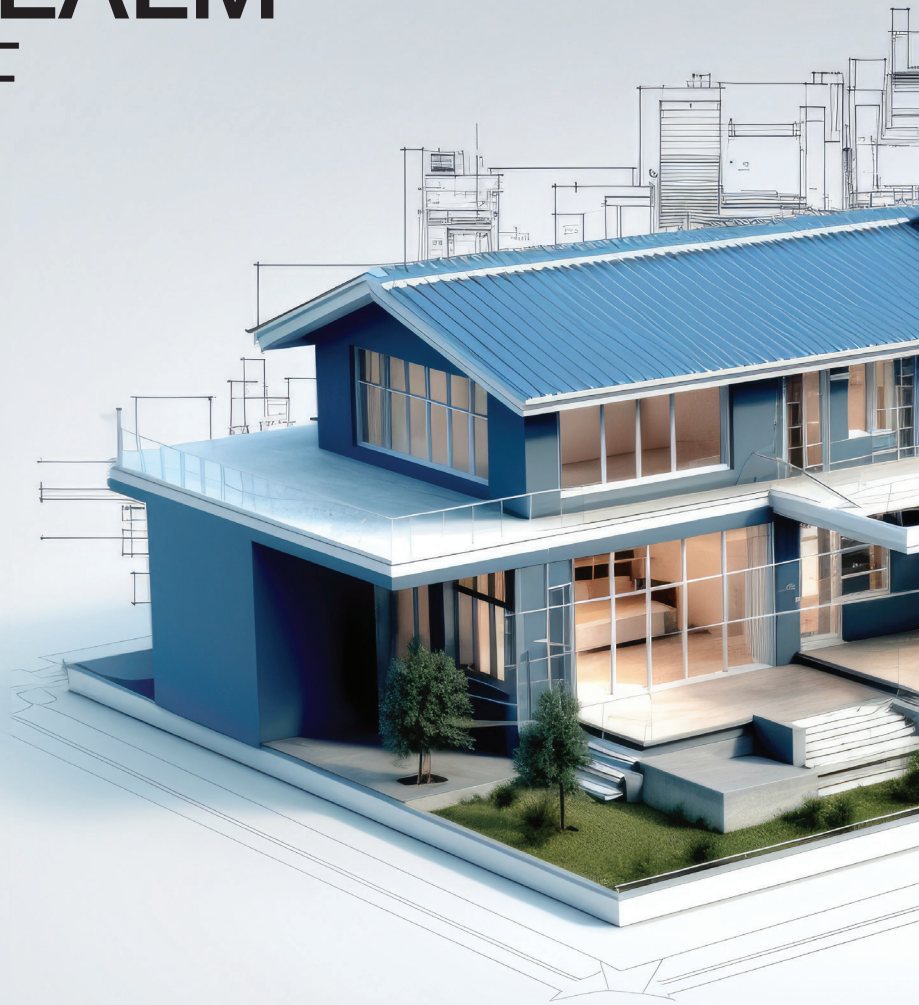


CADMATE offers robust APIs for developers to migrate or build applications on CADMATE. This year, in addition to the continuous improvement of integrity and compatibility of GRX, .NET and LISP interfaces, CADMATE 2025 now supports Python, offering over 790 commonly-used python interfaces, thus empowering more robust customization and automation.





DISCOVER THE **EXCITING REALM** OF TAKEOFF



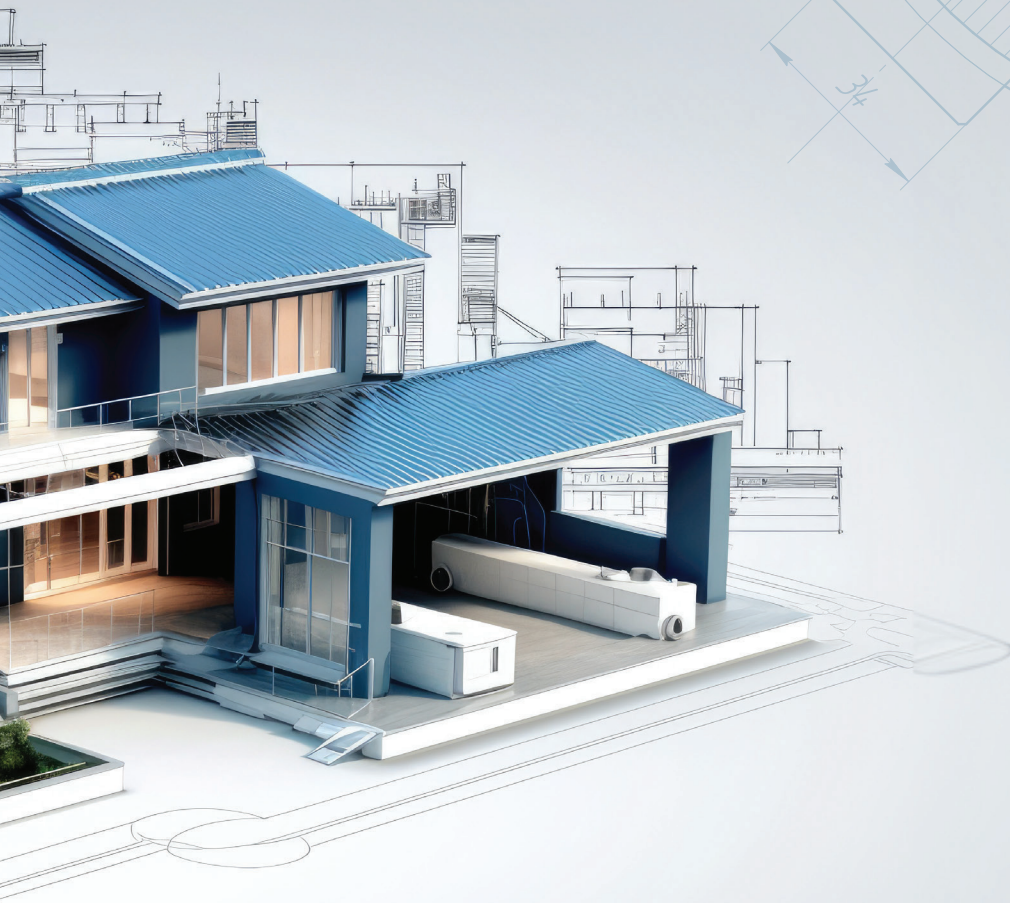
Uncover the benefits of CADMATE TAKEOFF tailored to your needs. Instantly estimate your projects and conduct digital takeoffs on drawings, effortlessly sending quantities and estimates directly to the field for seamless communication. Bid farewell to expensive printing costs and time-consuming errands, while also conserving time, money, and resources.



Leveraging cutting-edge PDF and DWG technology within CADMATE TAKEOFF, the application ensures exceptional clarity and precision while working with drawings.



Accuracy holds paramount significance in quantity estimation, and the incorporation of advanced technologies into this application renders it highly coveted. CADMATE software introduces CADMATE TAKEOFF, an unparalleled application designed for estimation and quantity takeoff, making it a standout choice.



WHO CAN BENEFIT FROM CADMATE TAKEOFF?

- Architects
- Engineers
- General Contractors
- Public Sector

FEATURES ENHANCEMENT



△ PDF/DWG/DWF Support

△ Perimeter Calculation

△ Volume Calculation

△ Surface Area Calculation

△ Auto Count

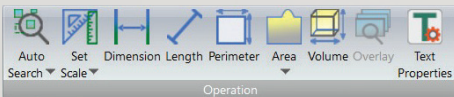
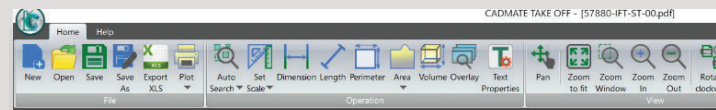
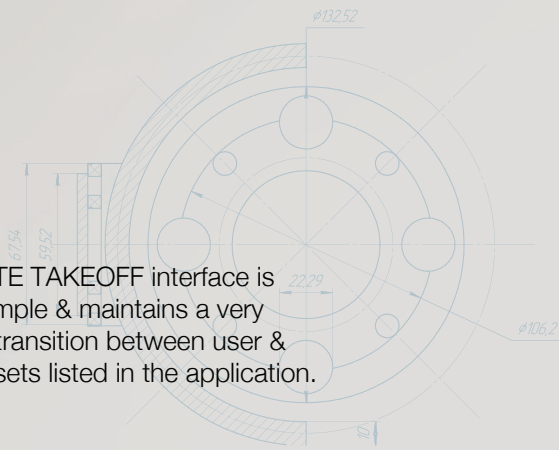
△ Length Calculation

△ Area Calculation

△ Text Count



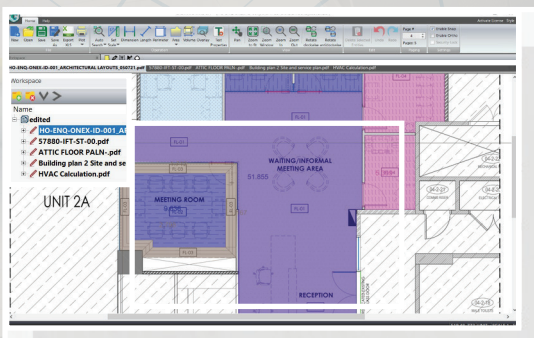
CADMATE TAKEOFF interface is sleek, simple & maintains a very smooth transition between user & the tool sets listed in the application.



CADMATE TAKEOFF operation panel has sets of advanced semi parametric tools which will help the engineers to automate the work process to make it more reliable, error free and faster.



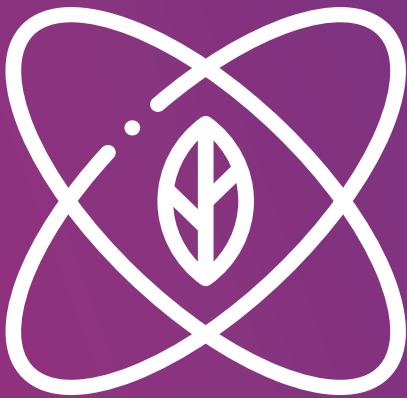
CADMATE TAKEOFF supports MDI (Multiple Document Interface) that enables the user to work with multiple documents at the same time. This helps to combine various verticals into a single platform and carry out the intended calculations.



Calculation of Perimeter, Area and Volume can now be automated with ease using the Auto select functionality with CADMATE TAKEOFF

INNOVATIVE & SUSTAINABLE SOLUTION

Covering all fields of mechanical design, CADMATE MECHANICAL is a professional designing and drawing software specially built for manufacturing. No matter what kind of design task you are facing, CADMATE MECHANICAL helps to complete your ideas perfectly.



Environmental
Sensitivity

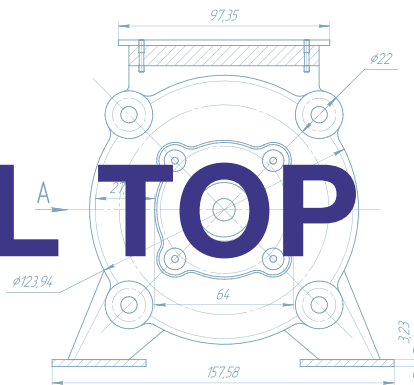


Personalised
Solutions



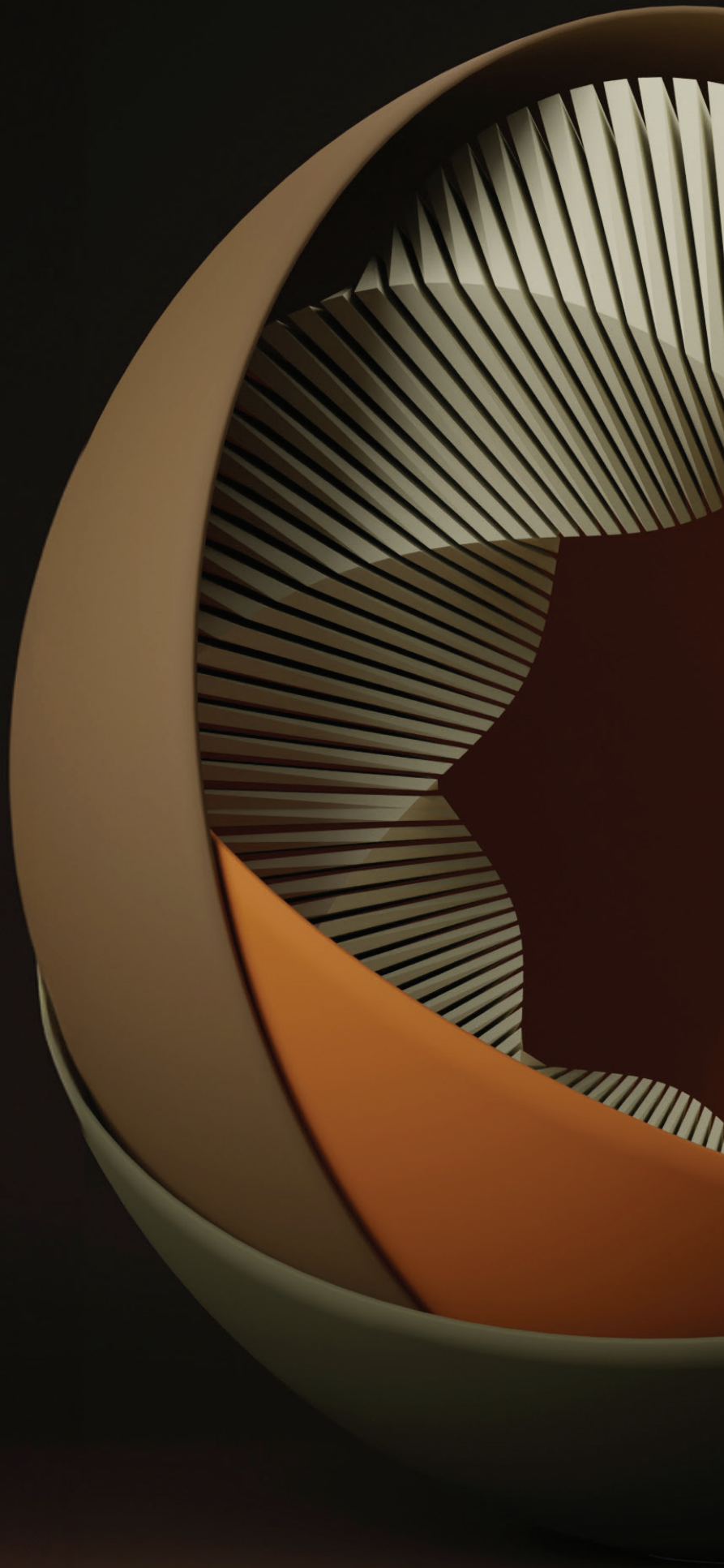
Performance
Measures

CADMATE MECHANICAL REASONS



- The only solution compatible with ACM, directly open, edit and save ACM drawings.
- All the features of CADMATE platform.
- Best choice for MECHANICAL design.
- Comprehensive dimensioning and annotation tools.
- Automatic generation of data management like tables, parts list and BOM.
- Compatible with most of CAD software drawing information.
- Parametric parts library.
- Comprehensive PLM data interface.





CADMATE
Your design companion

 www.cadmate.org

 support@cadmate.org